

#1

A _____ function is a function whose graph is a straight line.

© Bright in the Middle

#2

Which of the following is a linear equation?

$$y = -3x + 7 \qquad y = \frac{2}{x} + 7$$

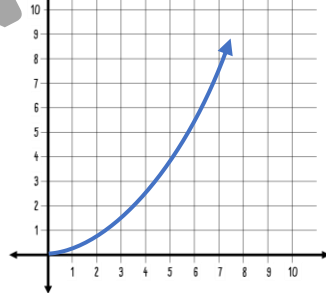
A

B

© Bright in the Middle

#3

Linear, nonlinear, or not a function?



© Bright in the Middle

#4

What could you change about the following table to make it a linear function?

x	y
0	-7
1	-2
2	1
3	5

© Bright in the Middle

#5

Why isn't the following function linear?

$$y = x^2 + 5$$

© Bright in the Middle

#6

In which choice do all points lie on the same straight line?

A: (0, -4), (0, -2), (3, 6)

B: (1, 2), (4, 4), (3, 5), (6, 7)

C: (4, 5), (-2, 3), (0, 1), (2, -1)

© Bright in the Middle

#7

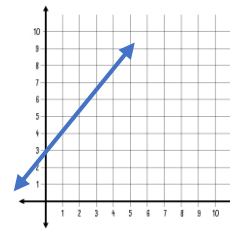
Can the following problem be represented as a linear function?

A movie theater charges \$10 for adults and \$5 for children. How many adult tickets and children tickets were sold if a total of 92 tickets were sold for a total cost of \$720?

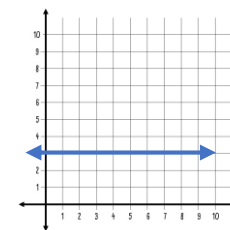
© Bright in the Middle

#8

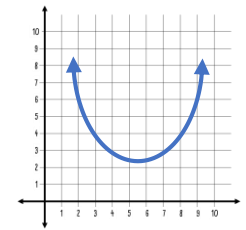
Which of the following represents a function that is nonlinear?



A



B



C

© Bright in the Middle

Name

Date

Identifying Linear Functions Task Cards

1	2	3	4	5	6
7	8	9	10	11	12
13	14	15	16	17	18
19	20	21	22	23	24

© BRIGHT in the middle