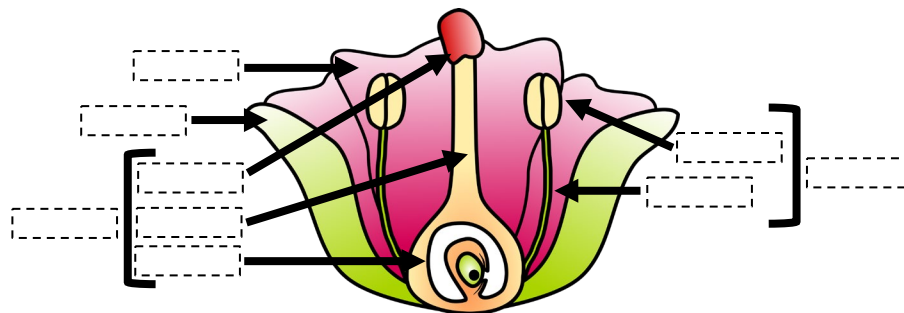


Activity 1: Parts of a Flower Diagram

In this activity, students can cut and glue the part of the flower to the correct location to complete the parts of a flower diagram.

This activity could be used as an introductory WONDER strategy, for an interactive notebook, post-assessment, science center, test review, and more!

Don't have scissors and glue? Just have students write in the terms to complete the diagram!

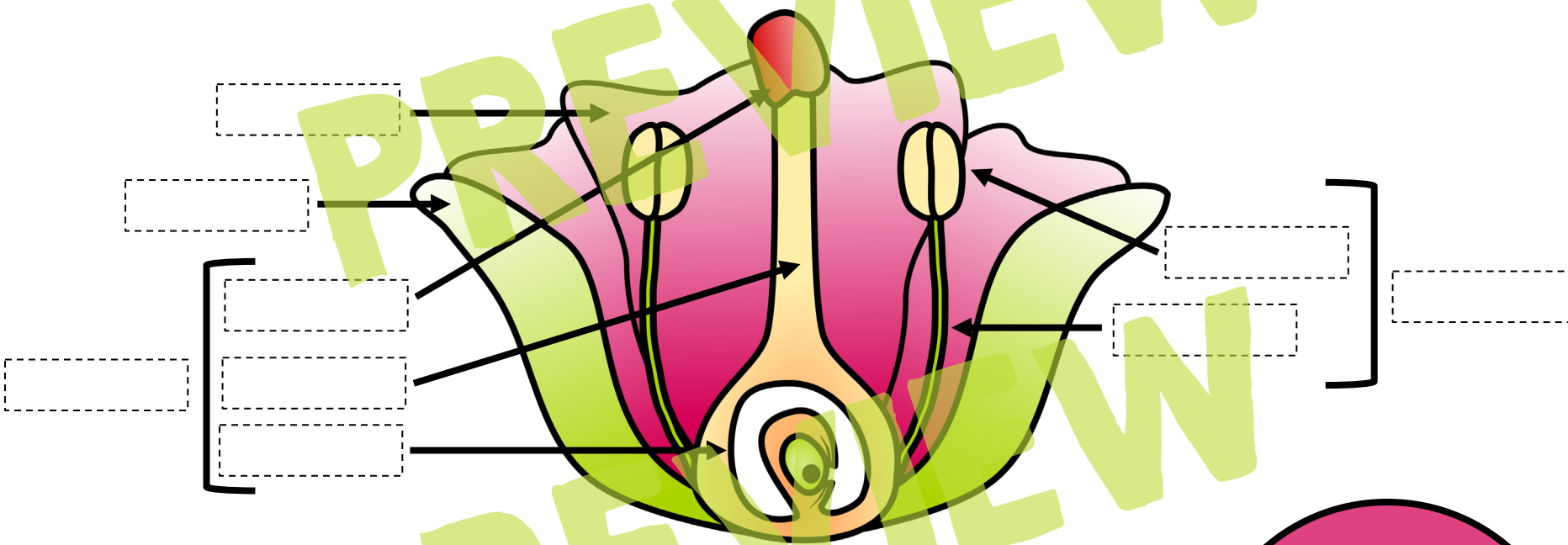


Name _____

Parts of a Flower

Date _____

Directions: Cut and glue the term to the correct location to complete the parts of a flower diagram.



filament

stamen

sepal

ovary

anther

stigma

pistil

**B&W
Version
Included
as Well!**

Activity 2: Parts of a Flower Vocabulary Cut-and -Glue

In this activity, students can cut and glue the part of the flower functions to the correct part of the flower terms.

This activity could also be used as an introductory WONDER strategy, for an interactive notebook, post-assessment, science center, test review, and more!

Don't have scissors and glue? Just have students write in the definitions to complete the diagram!

anther

male reproductive structure
of a flower that produces
and contains pollen

Name _____

Parts of a Flower

Date _____

Directions: Cut and glue the function to the correct part of the flower.

petal

[Dashed box for petal]

ovary

[Dashed box for ovary]

sepal

[Dashed box for sepal]

stamen

[Dashed box for stamen]

pistil

[Dashed box for pistil]

anther

[Dashed box for anther]

stigma

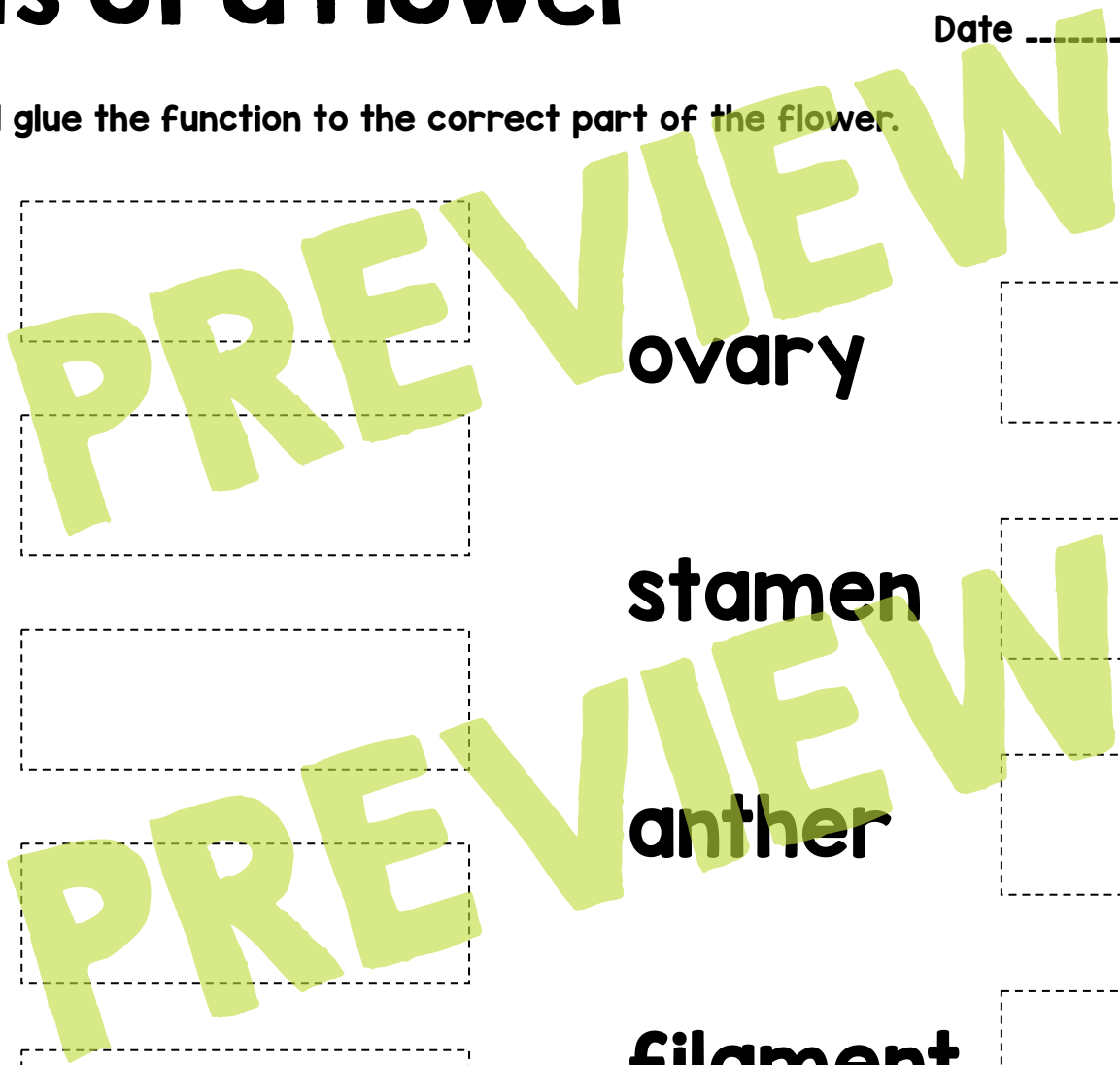
[Dashed box for stigma]

filament

[Dashed box for filament]

style

[Dashed box for style]



Parts of Flower Functions

modified leaves and often brightly colored; arranged in a circle around the top of a flower stem

male reproductive structure of a flower that is a stalk that holds up the anther

male reproductive structure of a flower that produces and contains pollen

often looks like leaves; protects flower before it blossoms into a flower

female reproductive structures of a flower

female reproductive structure where pollen is captured in a flower

female reproductive structure that connects the stigma to the ovary

female reproductive structure that holds ovules which produces eggs

male reproductive structures of a flower

Activity 3: Parts of a Flower Vocabulary Matching

The teacher can cut each card out for this activity: terms and functions. Then, you'll have a vocabulary matching set!

In this activity, students can match each part of the flower function to the correct part of the flower.

This activity could also be used as an introductory WONDER strategy, for an interactive notebooks, post-assessment, science center, test review, and more!

This is a great group activity!

STYLE

female reproductive structure that connects the stigma to the ovary

Parts of Flower

PETAL

SEPAL

PISTIL

STIGMA

STYLE

OVARY

STAMEN

ANTHER

FILAMENT

Parts of Flower Functions

modified leaves and often brightly colored, arranged in a circle around the top of a flower stem

male reproductive structure of a flower that is a stalk that holds up the anther

male reproductive structure of a flower that produces and contains pollen

often looks like leaves; protects flower before it blossoms into a flower

female reproductive structures of a flower

female reproductive structure where pollen is captured in a flower

female reproductive structure that connects the stigma to the ovary

female reproductive structure that holds ovules which produces eggs

male reproductive structures of a flower