

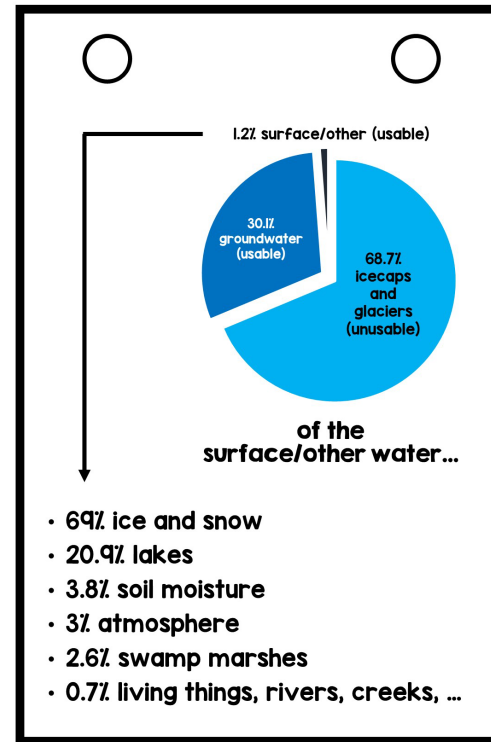
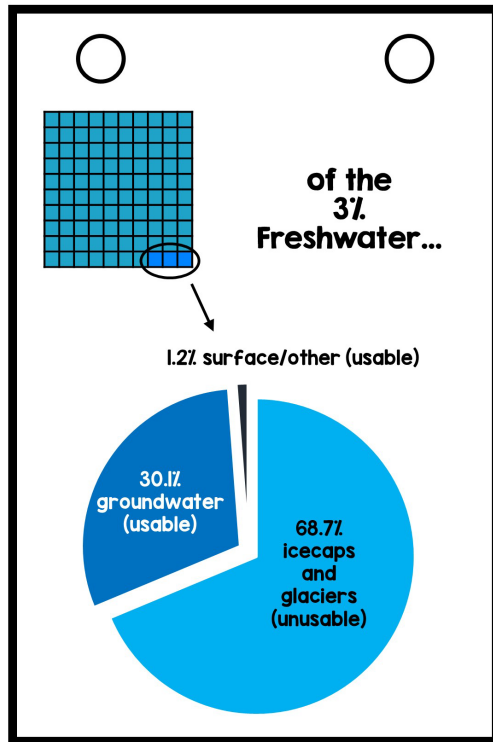
58

# Anchor Charts for HYDROSPHERE

# Anchor Charts Cover:

- hydrogen bonds
- properties of water
- polarity
- capillary action
- adhesion
- cohesion
- surface tension
- specific heat
- density
- water as the universal solvent
- solute and solvent
- salinity
- Earth's spheres
- the water cycle (hydrologic cycle)
- land and water on earth's surface
- saltwater vs. freshwater
- watersheds
- wetlands
- river basin

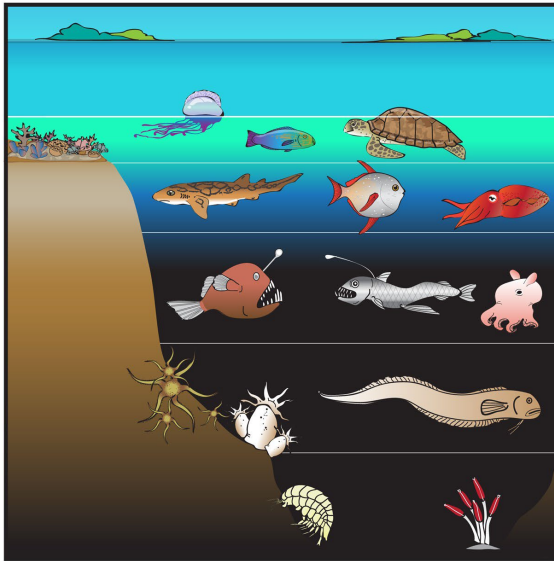
- **aquifer**
- **how the ocean gets salty**
- **hydrothermal vents**
- **salinity in water**
- **Earth's oceans**
- **ocean basis**
- **the shore**
- **photic zone, disphotic zone, aphotic zone**
- **plankton, nekton, benthos**
- **oceans as a reservoir**
- **ocean currents**
- **upwelling**
- **dissolved gases**
- **evaporation, transpiration, condensation, precipitation, sublimation, deposition, surface runoff, infiltration, groundwater storage, freshwater storage**
- **physical water quality indicators**
- **chemical water quality indicators**
- **biological water quality indicators**
- **point source and non-point source pollution**



# Frame Size

## In the photic zone...

- Organisms such as dolphins, turtles, jellyfish, sting rays, seals, sea anemones, seaweed, etc. live here.
- **Phytoplankton and algae** undergo photosynthesis (marine producers).



© Bright in the Middle

## Disphotic Zone twilight zone

- sunlight sometimes reaches, but **plants can't grow**
- **200 - 1,000 meters** below the surface

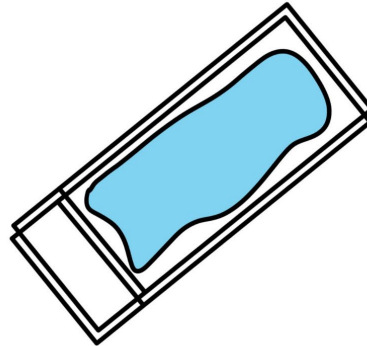


© Bright in the Middle

# Half-Sheet Size

# Adhesion

water molecules stick  
to other substances



- contributes to water transport as water adheres to the wall of vessels
- helps fight gravity

© Bright in the Middle

# Full-Sheet Size